



Heated Shop Spaces

7260 Commerce Plaza Drive - Neenah, WI 54956

PH: (920) 931-0017 or (920) 931-0018

FAX: (208) 275-1357

Email: info@BreezewoodRentals.com

Unit A17

Unit A16

Unit A15

Unit A14

Unit A13

Unit A12

Unit A11

Unit A10

Unit A9

Unit A8

Unit A7

Unit A6

Unit A5

Unit A4

Unit A3

Unit A2

Unit A1

Breezewood Rentals heated shop and storage spaces are perfect for your startup or other small business or hobby shop as well as a place to park your collectable car, boat, or RV. All units come with in floor heat, floor drain, and a wash sink. All units also have bathroom access (common, shared, or single tenant depending on how many units you occupy). With 800 amps of total on site power, each unit has a 6 breaker electrical panel (3 phase, 220, and 120 available) to service any of your electrical needs. All units are approximately 14' x 48' - or 672 sq. ft. with 16' ceilings. Demising walls are removable, so if you want to combine two or more units into one big open unit - no problem.

Flat rate rental puts your mind at ease because heat, electric, water, taxes, snow plow etc. is all included. No need to guess what your expenses are going to be which can be a big headache for any small business. Terms are one year minimum with 90 days notice required thereafter. following usage categories and rates:

Heated Shop Rates:

-\$500/mo - up to 65 degree average temperature.

-Autopay ACH or Credit Card only - we no longer accept cash.

-Pay 12 months in advanced and receive 5% off.

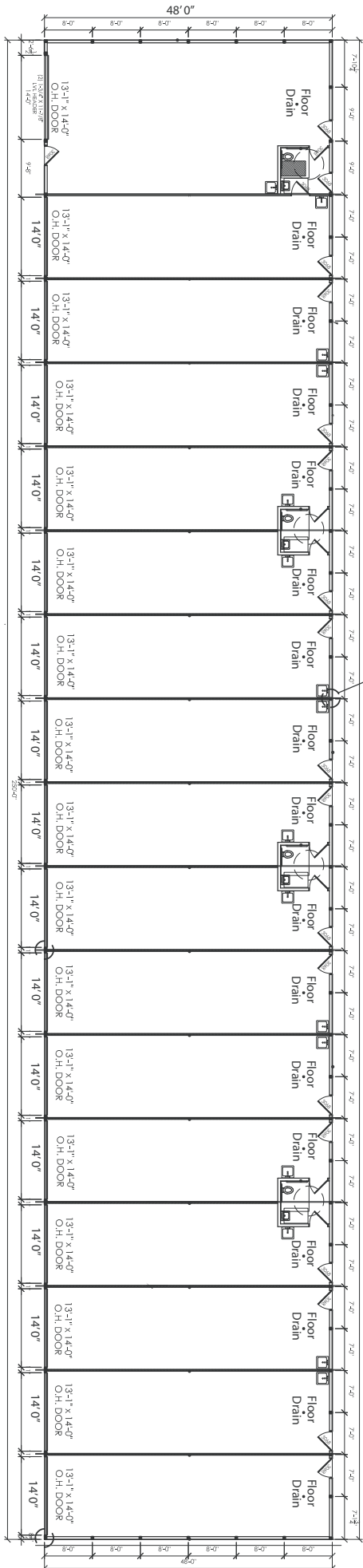
These units are in high demand and rent quickly. We encourage you to call us and get on our waiting list if were full.

NOW FEATURING SECURITY CAMERAS SURVEILING ENTIRE PREMISE!!!

(For all heated and mini units A-F)

We have cameras pointing in virtually every direction looking at all of the entry/exit points as well as the overhead storage doors themselves. These high end cameras are state of the art, infrared (can see at night), and have forensic zoom capabilities. You will not find this level of security at most other facilities!

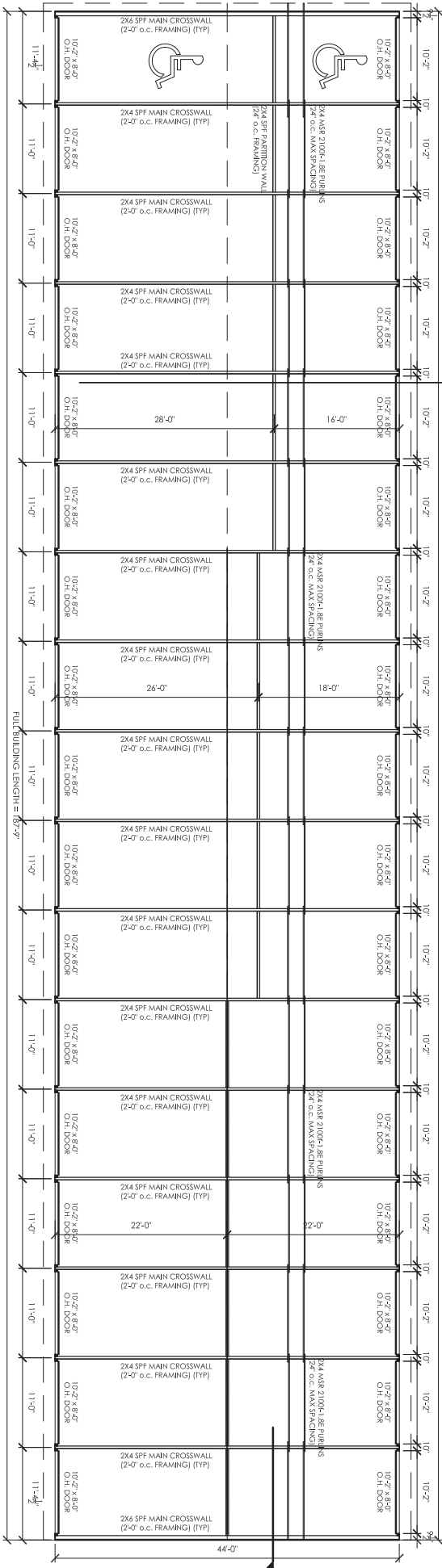
Reasonable use and conservation of energy is required. Keeping overhead doors or other doors wide open during the winter with the heat on, plugging in multiple high draw appliances or tools etc. above and beyond reasonable use are not allowed. If special circumstances that require high draws are desired we can customize your montly contract and rate upon request.



Located right next to Breezewood Heated Shop Rentals, Breezewood Mini Storage is a great solution to your cold storage needs with many sizes to choose from. 3 months minimum rentals, 2 months advanced deposit required.



- Unit B34
- Unit B33
- Unit B32
- Unit B31
- Unit B30
- Unit B29
- Unit B28
- Unit B27
- Unit B26
- Unit B25
- Unit B24
- Unit B23
- Unit B22
- Unit B21
- Unit B20
- Unit B19
- Unit B18



- Unit B17
- Unit B16
- Unit B15
- Unit B14
- Unit B13
- Unit B12
- Unit B11
- Unit B10
- Unit B9
- Unit B8
- Unit B7
- Unit B6
- Unit B5
- Unit B4
- Unit B3
- Unit B2
- Unit B1

Sizes and Rates Bldg B			
8' Tall Doors			
Depth	Width	Door Height	ACH / Credit Card Only 12 mo Advance Save 5%
10'	11'	8'	\$77
12'	11'	8'	\$81
14'	11'	8'	\$85
16'	11'	8'	\$90
18'	11'	8'	\$94
20'	11'	8'	\$98
22'	11'	8'	\$102
24'	11'	8'	\$109
26'	11'	8'	\$120
28'	11'	8'	\$125
30'	11'	8'	\$130
32'	11'	8'	\$136
34'	11'	8'	\$141
36'	11'	8'	\$146
44'	11'	8'	\$179

Automatic ACH/ Credit Card Only. We no longer accept cash. Pay 12 months in advanced and save 12%.

Sizes and Rates Bldg D and F			
10' Tall Doors			
Depth	Width	Door Height	ACH / Credit Card Only 12 mo Advance Save 5%
16'	11'	10'	\$92
18'	11'	10'	\$97
20'	11'	10'	\$101
22'	11'	10'	\$106
24'	11'	10'	\$112
26'	11'	10'	\$124
28'	11'	10'	\$129
32'	11'	10'	\$140

Automatic ACH/ Credit Card Only. We no longer accept cash. Pay 12 months in advanced and save 12%.

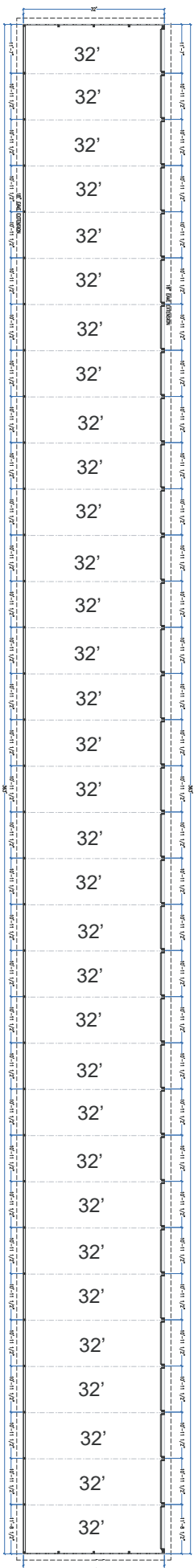
What we have, that most mini storage units don't:

Well Lit Parking Lot

Our mini storage units have bright LED lights surrounding the entire unit, and are located right next to the very busy Highway 76. The better the lighting, the more secure. And there are plenty of sets of eyes keeping a watch out for suspicious behavior. The road we are on is a common route where patrol cars do drive by's for security purposes. Our main office is also across the street, so we keep a close eye during business hours.

Easy Access

We have a double culvert driveway access and gravel all the way around the building so you can avoid having to back in or out of the facility. We also have units with larger than normal driveway spaces to aid in backing your equipment in and out of your unit.

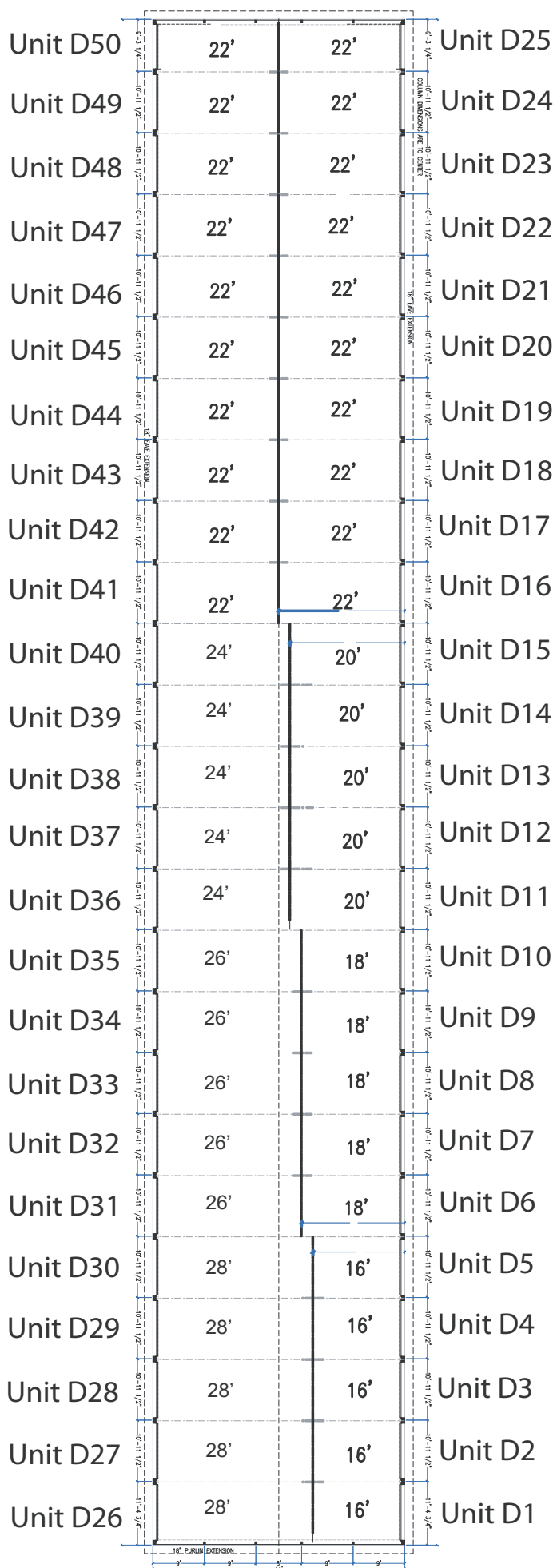


Unit F33
Unit F32
Unit F31
Unit F30
Unit F29
Unit F28
Unit F27
Unit F26
Unit F25
Unit F24
Unit F23
Unit F22
Unit F21
Unit F20
Unit F19
Unit F18
Unit F17
Unit F16
Unit F15
Unit F14
Unit F13
Unit F12
Unit F11
Unit F10
Unit F9
Unit F8
Unit F7
Unit F6
Unit F5
Unit F4
Unit F3
Unit F2
Unit F1

BUILDING F



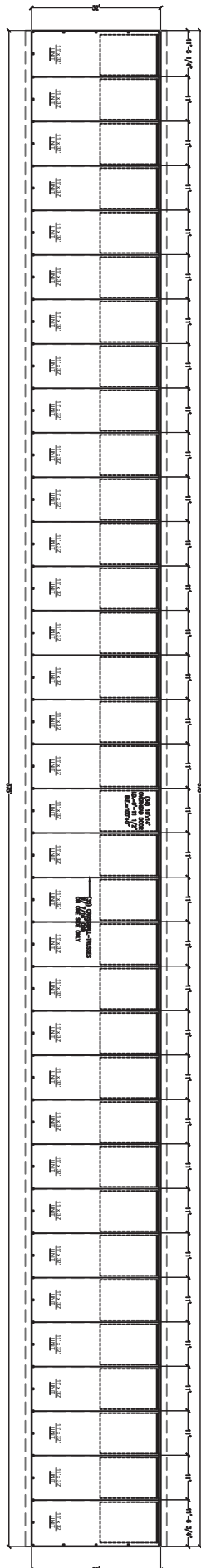
FREE Power for Trickle Charger!
All units in building F come with a 5 amp outlet for trickle charger use. 15 amp also available for an extra charge. Please call for current rates.



BUILDING D



Unit G34
Unit G33
Unit G32
Unit G31
Unit G30
Unit G29
Unit G28
Unit G27
Unit G26
Unit G25
Unit G24
Unit G23
Unit G22
Unit G21
Unit G20
Unit G19
Unit G18
Unit G17
Unit G16
Unit G15
Unit G14
Unit G13
Unit G12
Unit G11
Unit G10
Unit G9
Unit G8
Unit G7
Unit G6
Unit G5
Unit G4
Unit G3
Unit G2
Unit G1



Cold Mini Storage Building G

PH: (920) 931-0017 or (920) 931-0018

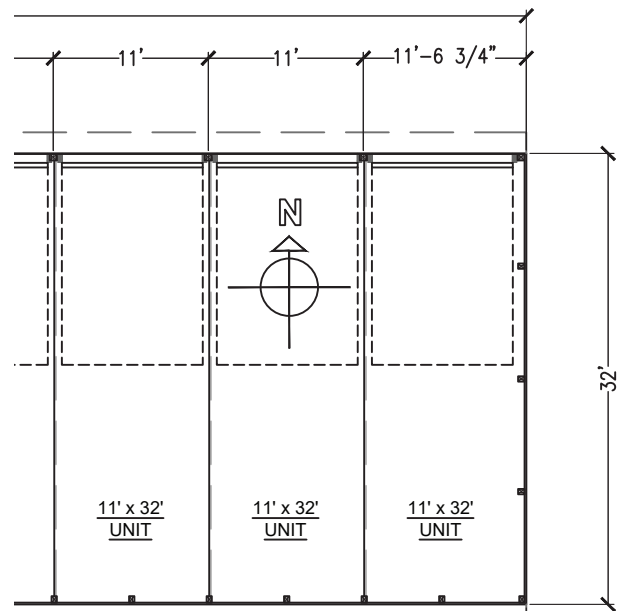
FAX: (208) 275-1357

Email: info@BreezewoodRentals.com

Sizes and Rates Bldg G 14' Tall Doors!			
Depth	Width	Door Height	ACH / Credit Card Only 12 mo Advance Save 5%
32'	11'	14'	\$160

**5 Amp 500W Trickle Charger Outlet
and LED lights included!**

Building G features extra tall doors to fit your RV or boat with tall windshield. Also includes and outlet to keep your battery trickle charged all season as well as LED motion sensor lights on the inside. All units for building G are the same size on the inside.





24/7 Security Camera Surveillance on Entire Premise



Breezewood Rentals now has 24/7 security camera surveillance on the entire Neenah storage campus. We have cameras pointing in virtually every direction looking at all of the entry/exit points as well as the overhead storage doors themselves. These high end cameras are state of the art, infrared (can see at night), and have forensic zoom capabilities. You will not find this level of security at most other facilities.

These are not just fake "deterrent" cameras, but actually record all activity in the area 24/7 to not only deter but to aid in law enforcement. In addition, we have a close relationship with the Winnebago County Sheriff who does drive by patrols and constantly monitors for suspicious activity.